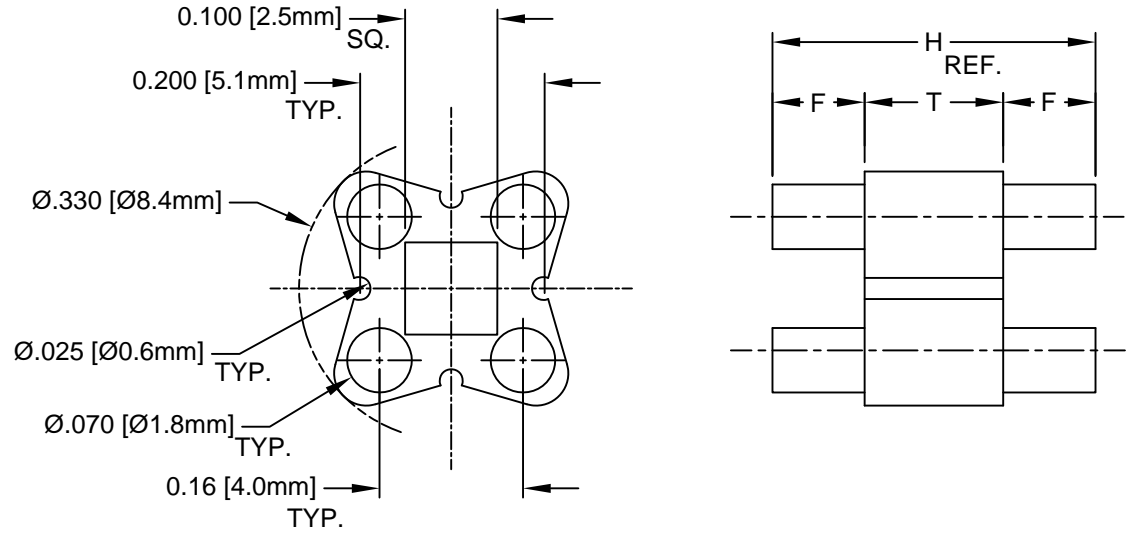



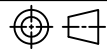
| REV. | DESCRIPTION | DATE | APPROVED |
|------|--------------------------------|----------|----------|
| B | Engineering Update w/o Changes | 02/16/04 | M. C. |
| C | Removed Material Code | 05/22/16 | J. C. |
| | | | |
| | | | |



| PART NO. | H | T | F |
|----------|------------|-----------|------------|
| 126-030 | .030 (.76) | .030(.76) | 000 |
| 126-040 | .040 (1.0) | .030(.76) | .005 (.13) |
| 126-050 | .050 (1.3) | .030(.76) | .010 (.25) |
| 126-060 | .060 (1.5) | .030(.76) | .015 (.38) |
| 126-070 | .070 (1.8) | .030(.76) | .020 (.51) |
| 126-080 | .080 (2.0) | .030(.76) | .025 (.64) |
| 126-090 | .090 (2.3) | .030(.76) | .030 (.76) |
| 126-100 | .100 (2.5) | .030(.76) | .035 (.89) |
| 126-110 | .110 (2.8) | .030(.76) | .040 (1.0) |
| 126-120 | .120 (3.0) | .030(.76) | .045 (1.1) |
| 126-130 | .130 (3.3) | .030(.76) | .050 (1.3) |

| PART NO. | H | T | F |
|----------|------------|-----------|------------|
| 126-140 | .140 (3.6) | .030(.76) | .055 (1.4) |
| 126-150 | .150 (3.8) | .030(.76) | .060 (1.5) |
| 126-160 | .160 (4.1) | .030(.76) | .065 (1.7) |
| 126-170 | .170 (4.3) | .030(.76) | .070 (1.8) |
| 126-180 | .180 (4.6) | .030(.76) | .075 (1.9) |
| 126-190 | .190 (4.8) | .030(.76) | .080 (2.0) |
| 126-200 | .200 (5.1) | .030(.76) | .085 (2.2) |
| 126-210 | .210 (5.3) | .030(.76) | .090 (2.3) |
| 126-220 | .220 (5.6) | .030(.76) | .095 (2.4) |
| 126-230 | .230 (5.8) | .030(.76) | .100 (2.5) |
| 126-240 | .240 (6.1) | .030(.76) | .105 (2.7) |

3. NO MEASURABLE AXIAL FLASH ON FEET 8 PL.
2. MATERIAL: NYLON 6/6, 94V-2, WHITE.
1. GENERAL SPECIFICATIONS: BIVAR MOLDED COMPONENT SPECIFICATION BV00-E101.

| | | | |
|--|--------------------------|---|--|
| STANDARD TOLERANCE (UNLESS OTHERWISE SPECIFIED) | |  4 THOMAS, IRVINE, CA. 92618 TEL: (949) 951-8808 FAX: (949) 951-3974 | |
| DECIMALS | ANGULAR | | |
| .X ± .1 | X° ± 1° |  TITLE: PERM-O-PAD TO-5 to TO-18 MOUNT | |
| .XX ± .01 | | | |
| .XXX ± .005 | | PART NO: 126-XXX | |
| DESIGNED: D. Green | DATE: 04/14/03 | REVISION: C | |
| CHECKED: M. Chen | DATE: 04/14/03 | CAGE CODE : 32559 SHEET # 1 OF 1 | |
| CAD GENERATED DOCUMENT. DO NOT MEASURE DRAWING. | | | |