

Dual Gooseneck LED Task Light

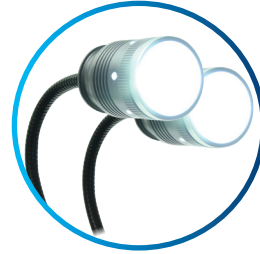
with Magnetic Base and 4" Table Clamp



Ultra
Bright
Dual LED
Lamps

Mounting
Options
Table Clamp/
Magnetic
Bases

Flexible
Positioning
Two 17"
Goosenecks



Dual Ultra-Bright LED Lamps

- 500LM of brightness intensity
- Toggle the LEDs for single or dual lamp illumination



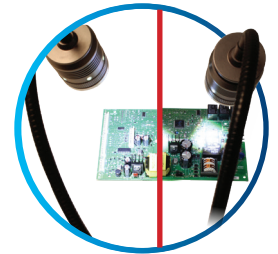
Dual 17" Goosenecks

- Two flexible goosenecks
- Easy precise positioning



Dual Mounting Options

- 4" table clamp
- Dual magnetic bases



Dual Focus Rings

- Flush Lighting
- Spot Lighting

Aven's **Dual Gooseneck LED Task Light** is the most versatile work light available. Designed for workshops, machining centers, warehouses, garages, science labs, factories, and home use, this task light can be configured to add crucial illumination for countless applications.

This task light comes equipped with **two 17" flexible goosenecks**. The goosenecks bend easily, providing limitless positioning options. Each lamp comes equipped with a **focus ring**, which can be used to alternate between flush and spot lighting. The built-in **4" table clamp** secures to the side of any work bench, or use the **dual magnetic bases** on a metal surface for horizontal, vertical or upside down positioning.

Features

- Powerful, long lasting, ultra bright LEDs deliver 500LM of flicker and ghost-free illumination
- Two adjustable 17" goosenecks provide unlimited positioning options
- On/Off button toggles between the lamps for single-lamp or dual-lamp lighting
- Magnetic base ideal for environments with metal surfaces
- Built-in 4" table clamp keeps the light still and secure

DUAL GOOSENECK LED TASK LIGHT	
LED QUANTITY	2
WEIGHT	1.9 lbs
BOX DIMENSIONS	2" x 3.5" x 25"
MAX LUMEN	500LM
COLOR	Brushed silver with gold colored ring
LIGHT COLOR	White
GOOSENECK LENGTH	17"
TABLE CLAMP OPENING	4"
POWER SUPPLY	110V/220V
PACKAGE CONTENTS	Dual LED Task Light, power supply, user guide

Part #	Description
26534	Dual Gooseneck LED Task Light with Magnetic Base and 4" Table Clamp