

ISL8273MEVAL1Z Evaluation Board User Guide

Description

The [ISL8273M](#) is a 80A step-down DC/DC power supply module with an integrated digital PWM controller, dual-phase synchronous power switches, inductors and passives. Only input/output capacitors and minimal passives are needed to finish the design. 80A of continuous output current can be delivered without a need of airflow or heatsink. The ISL8273M uses ChargeMode™ control (ASCR) architecture, which responds to a transient load within a single switching cycle.

The ISL8273MEVAL1Z evaluation board is a 4.7in x 4.8in 8-layer FR4 board with 2oz. copper on all layers. This evaluation board comes with placeholders for pin-strap resistor population to adjust output voltage, switching frequency, soft-start/stop timing and input UVLO threshold, ASCR gain and residual parameters and device PMBus™ address. More configurations, such as sequencing, Digital-DC™ (DDC) bus configuration and fault limits can be easily programmed or changed via PMBus compliant serial bus interface.

The optional ZLUSBEVAL3Z (USB to PMBus adapter) is provided with this evaluation board, which connects the evaluation board to a PC to activate the PMBus communication interface. The PMBus command set is accessed by using the PowerNavigator™ evaluation software from a PC running Microsoft Windows. The ISL8273MEVAL1Z can operate in pin-strap mode without needing the ZLUSBEVAL3Z adapter or PMBus communication.

References

[ISL8273M](#) datasheet

Key Features

- V_{IN} range of 4.5V to 14V, V_{OUT} adjustable from 0.6V to 2.5V
- Programmable V_{OUT} , margining, input and output UVP/OVP, I_{OUT} limit, OTP/UTP, soft-start/stop, sequencing and external synchronization
- Monitor: V_{IN} , V_{OUT} , I_{OUT} , temperature, duty cycle, switching frequency and faults
- ChargeMode™ control tunable with PMBus
- Mechanical switch for enable and power-good LED indicator

Specifications

This board has been configured for the following operating conditions by default:

- $V_{IN} = 5V$ to 12V
- $V_{OUT} = 1V$
- $I_{MAX} = 80A$
- $f_{SW} = 364kHz$
- Peak efficiency: >90% at 70% load
- Output ripple: <10mV_{p-p}
- ASCR gain = 200, ASCR residual = 90
- On/off delay = 5ms; On/off ramp time = 5ms

Ordering Information

PART NUMBER	DESCRIPTION
ISL8273MEVAL1Z	ISL8273M evaluation board, ZLUSBEVAL3Z adapter, USB cable

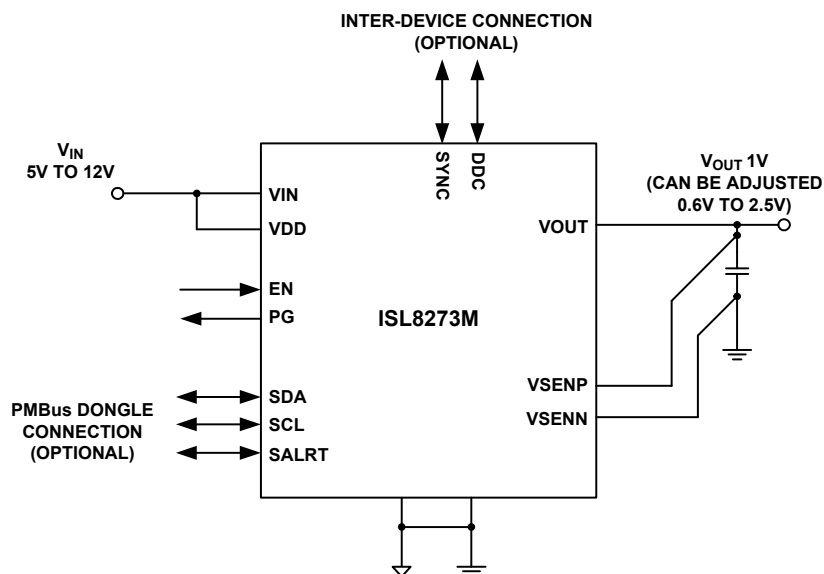


FIGURE 1. BLOCK DIAGRAM

User Guide 036

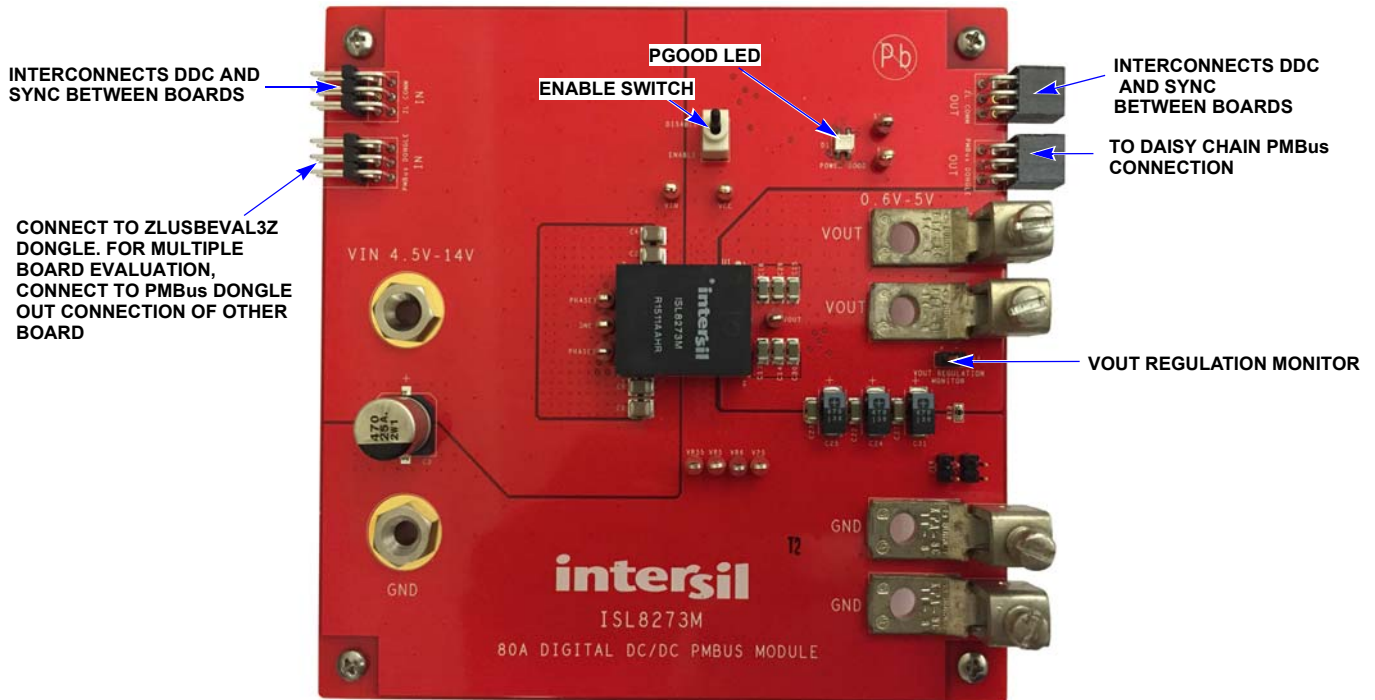


FIGURE 2. TOP SIDE

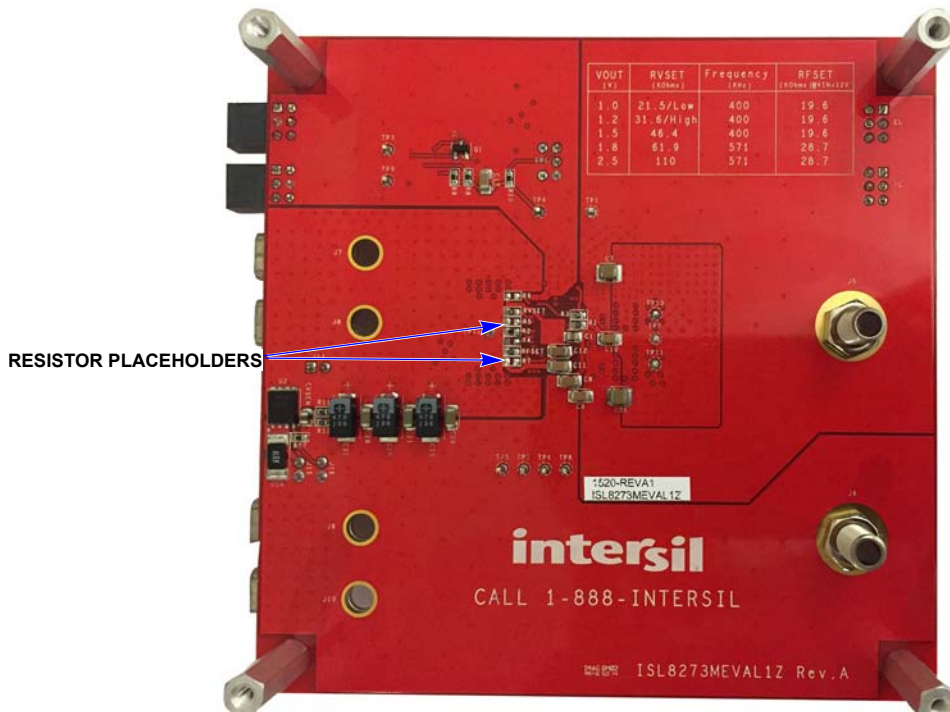


FIGURE 3. BOTTOM SIDE

Recommended Equipment

- DC power supply with minimum 15V/40A sourcing capacity
- Electronic load capable of sinking current up to 80A
- Digital Multimeters (DMMs)
- Oscilloscope with higher than 100MHz bandwidth

Functional Description

The ISL8273MEVAL1Z provides all circuitry required to evaluate the features of the ISL8273M. A majority of the features of the ISL8273M, such as compensation-free ChargeMode™ control, soft-start delay and ramp times, supply sequencing and voltage margining are available on this evaluation board. For sequencing evaluation, the board can be connected to any Intersil digital module evaluation board that supports the DDC bus.

[Figures 2](#) and [3](#) show the board images of the ISL8273MEVAL1Z evaluation board.

Quick Start Guide

Pin-strap Option

ISL8273MEVAL1Z can be configured in pin-strap mode with standard 1% 0603 resistors. PMBus interface is not required to evaluate ISL8273M in pin-strap mode. Output voltage (V_{OUT}), switching frequency (f_{SW}), soft-start/stop delay and ramp time, input undervoltage protection (UVLO) threshold, ASCR gain and residual, and device PMBus address can be changed by populating recommended resistors at placeholders provided in the evaluation board. By default, the evaluation board operates in pin-strap mode and regulates at $V_{OUT} = 1V$, $f_{SW} = 364kHz$, soft-start/stop delay time = 5ms, soft-start/stop ramp time = -5ms to 5ms, UVLO = 4.5V, ASCR gain = 200, ASCR residual = 90 and PMBus address = 28h. Follow these steps to evaluate the ISL8273M in pin-strap mode.

1. Set ENABLE switch to “DISABLE”.
2. Connect Load to VOUT lug connectors (J7-J8 and J9-J10).
3. Connect power supply to VIN connectors (J5 and J6). Make sure power supply is not enabled when making connection.
4. Turn power supply on.
5. Set ENABLE switch to “ENABLE”.
6. Measure 1V V_{OUT} at probe point labeled “VOUT REGULATION MONITOR” (J11).
7. Observe switching frequency of 364kHz at probe points labeled “PHASE1” (TP10) and “PHASE2” (TP11).
8. To measure the module efficiency, connect the multimeter voltage probes at probe points labeled “VIN” (TP1), “GND” (TP2) and “VOUT” (TP12).
9. To change V_{OUT} , disconnect board from the setup and populate a 1% standard 0603 resistor at RVSET placeholder location on bottom layer. Refer to the “Output Voltage Resistor Settings” table in the [ISL8273M](#) datasheet for recommended values. By default, VOUT_MAX is set to 110% of V_{OUT} set by pin-strap resistor.
10. To change switching frequency, disconnect board from the setup and populate a 1% standard 0603 resistor at the RFSET

placeholder location on bottom layer. Refer to the “Switching Frequency Resistor Settings” table in the [ISL8273M](#) datasheet for recommended values.

11. To change soft-start/stop delay and ramp time, disconnect board from the setup and populate a 1% standard 0603 resistor at R_6 placeholder location on bottom layer. Refer to the “Soft Start/Stop Resistor Settings” table in the [ISL8273M](#) datasheet for recommended values.
12. To change UVLO, disconnect board from the setup and populate a 1% standard 0603 resistor at the R_6 placeholder location on bottom layer. Refer to the “UVLO Resistor Settings” table in the [ISL8273M](#) datasheet for recommended values. Notice that the UVLO programming shares the same pin with soft-start/stop programming.
13. To change ASCR gain and residual, disconnect board from the setup and populate a 1% standard 0603 resistor at the R_7 placeholder location on bottom layer. Refer to the “ASCR Resistor Settings” table and the design guide matrix in the [ISL8273M](#) datasheet for recommended values.

PMBus Option

ISL8273MEVAL1Z can be evaluated for all features using the provided ZLUSBEVAL3Z dongle and PowerNavigator™ evaluation software. Follow these steps to evaluate the ISL8273M with PMBus option.

1. Install PowerNavigator™ software from the following Intersil website: www.intersil.com/powernavigator
2. Set ENABLE switch to “DISABLE”.
3. Connect Load to VOUT lug connectors (J7-J8 and J9-J10).
4. Connect power supply to VIN connectors (J5 and J6). Make sure power supply is not enabled when making connection.
5. Connect the ZLUSBEVAL3Z dongle (USB to PMBus™ adapter) to the ISL8273MEVAL1Z board using the 6-pin male connector labeled “PMBus DONGLE IN”.
6. Turn power supply on.
7. Connect supplied USB cable from computer USB to ZLUSBEVAL3Z dongle.
8. Launch PowerNavigator™ software.
9. It is optional to load a predefined setup from a configuration file using the PowerNavigator™ software. The ISL8273M device on the board operates in pin-strap mode from factory default, but the user may modify the operating parameters through the evaluation software or by loading a predefined set-up from a configuration file. A sample “[Configuration File](#)” on page 7 is provided and can be copied to a notepad editor to make desired changes. The default pin-strap configurations will be overwritten if a user-defined configuration file is loaded.
10. Set the ENABLE switch to “ENABLE”. Alternatively, the PMBus ON_OFF_CONFIG and OPERATION commands may be used from the PowerNavigator™ software to allow PMBus Enable.
11. Monitor and configure the ISL8273MEVAL1Z board using the PMBus commands in the evaluation software. To store the configuration changes, disable the module and use the command STORE_USER_ALL. To restore factory default

settings, disable the module and use the command RESTORE_FACTORY and STORE_USER_ALL.

12. PowerNavigator™ tutorial videos are available on the Intersil website. www.intersil.com/powernavigator
13. For sequencing via Digital-DC Bus (DDC) or to evaluate multiple Intersil digital power products using a single ZLUSBEVAL3Z dongle, the ISL8273M can be daisy chained with other digital power evaluation boards. The PMBus address can be changed by placing a 1% standard 0603 resistor at the R₄ placeholder location on the bottom layer. Refer to the “SMBus Address Resistor Selection” table in the [ISL8273M](#) datasheet for recommended values.

Evaluation Board Information

If input voltage is less than 5.3V, tie the VCC test point directly to VIN or to a separate 5V power supply for best efficiency.

If external synchronization is used, connect the SYNC test point to the external clock. Note that the external clock signal should be active before the module is enabled.

V_{OUT} Transient Response Check

The ISL8273MEVAL1Z board has a built-in transient load test circuit (see the schematic in [Figure 4](#)). A 100A N-Channel MOSFET (Manufacturer PN: BSC010NE2LSI) is connected across V_{OUT} and PGND next to the remote voltage sensing location (CVSEN). A 10mΩ current-sense resistor R₅₄ is used for monitoring the drain-to-source current of the MOSFET. For a transient load test, inject the gate drive pulse signal at J16. The load current can be monitored through J15. Because the MOSFET will operate in the saturation region instead of the linear region when the gate turn-on signal is applied, the pulse width and duty cycle of the gate signal must be limited small enough to avoid MOSFET overheating (recommended duty cycle should be less than 2%). The amplitude of the gate driver pulse voltage can be adjusted to obtain a desired transient load current step size.

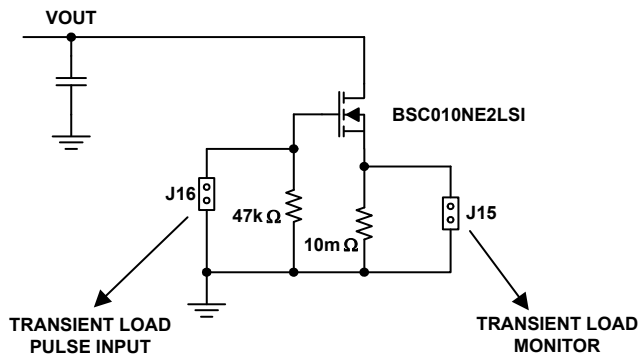


FIGURE 4. SCHEMATIC FOR TRANSIENT LOAD MEASUREMENT

Thermal Considerations and Current Derating

Board layout is very critical in order to make the module operate safely and deliver maximum allowable power. To work in the high temperature environments and carry large currents, the board layout needs to be carefully designed to maximize thermal performance. To achieve this, select enough trace width, copper weight and the proper connectors.

The ISL8273MEVAL1Z evaluation board is designed for running 80A at room temperature without additional cooling systems needed. However, if the output voltage is increased or the board is operated at elevated temperatures, then the available current is derated. Refer to the derated current curves in the [ISL8273M](#) datasheet to determine the maximum output current the evaluation board can supply. θ_{JA} is measured by inserting a thermocouple inside the module to measure peak junction temperature.

PCB Layout Guidelines

The ISL8273MEVAL1Z board layout has been optimized for electrical performance, low loss and good thermal performance.

The key features of the ISL8273MEVAL1Z layout are:

- Large PGND planes and a separate SGND plane. The SGND plane is connected to PGND on the second layer with a single point connection. Multiple vias are used for small pins such as J16, H16, K16, M5, M14, M17 and N5 to connect to inner SGND or PGND layer.
- Ceramic capacitors between VIN and PGND, V_{OUT} and PGND, and bypass capacitors between VDD, VDRV and the ground plane are placed close to the module to minimize high frequency noise. Some output ceramic capacitors are placed close to the V_{OUT} pads in the direction of the load current path to create a low impedance path for the high frequency inductor ripple current.
- Large copper areas are used for power path (VIN, PGND, V_{OUT}) to minimize conduction loss and thermal stress. Multiple vias are used to connect the power planes in different layers.
- Remote sensing traces are connected from the regulation point to VSENP and VSENN pins. The two traces are placed in parallel, to achieve tight output voltage regulation. The regulation point is on the right side of the board in between the V_{OUT} power lugs and the PGND power lugs.
- Multiple vias are used to connect PAD14 and 16 (SW1 and SW2) to inner layers for better thermal performance. The inner layer SW1 and SW2 traces are limited in area and are surrounded by PGND planes to avoid noise coupling. Caution was taken that no sensitive traces, such as the remote sensing traces, were placed close to these noisy planes.
- SWD1 (L3) and SWD2 (P10) pins are connected to SW1 and SW2 pads respectively with short loop wires of 40mil width. The wire width should be at least 20mils.

ISL8273MEVAL1Z Schematic

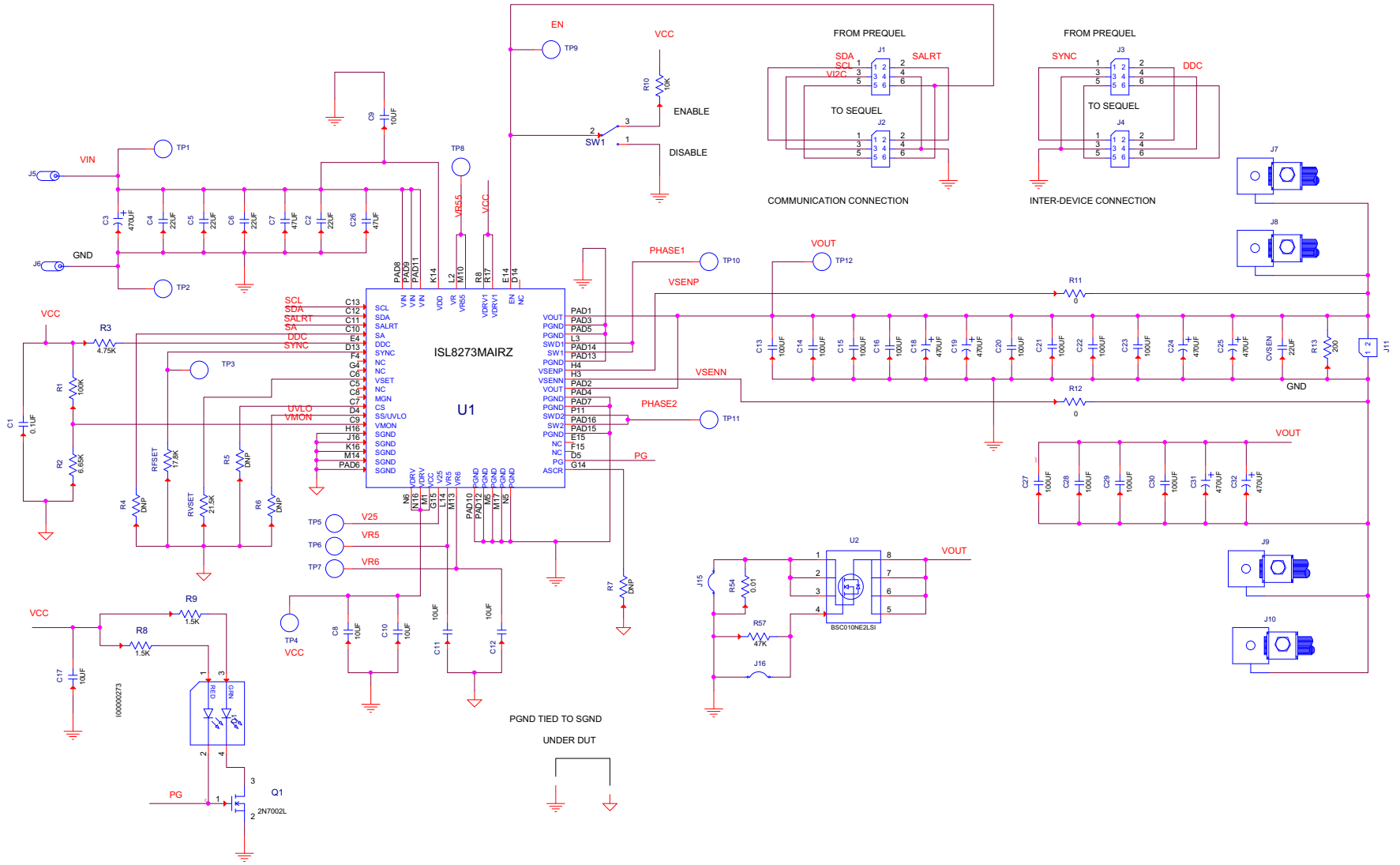


FIGURE 5. SCHEMATIC

User Guide 036

Bill of Materials

REFERENCE DESIGNATORS	QTY	MANUFACTURER	MANUFACTURER PART	DESCRIPTION
C1	1	PANASONIC	ECJ-2VB1E104K	CAP, SMD, 0805, 0.1µF, 25V, 10%, X7R, ROHS
CVSEN	1	JOHANSON DIELECTRICS INC	6R3R15X226KV4E	CAP, SMD, 0805, 22µF, 6.3V, 10%, X5R, ROHS
C8, C9, C10, C11, C12, C17	6	VENKEL	C1206X7R250-106KNE	CAP, SMD, 1206, 10µF, 25V, 10%, X7R, ROHS
C13-C16, C20-C23, C27-C30	12	MURATA	GRM31CR60J107ME39L	CAP, SMD, 1206, 100µF, 6.3V, 20%, X5R, ROHS
C2, C4, C5, C6	4	MURATA	GRM32ER71C226KE18L	CAP, SMD, 1210, 22µF, 16V, 10%, X7R, ROHS
C7, C26	2	TDK	C3225X5R1C476M	CAP, SMD, 1210, 47µF, 16V, 20%, X5R, ROHS
C18, C19, C24, C25, C31, C32	6	SANYO	6TPE470MI	CAP-POSCAP, LOW ESR, SMD, D4, 470µF, 6.3V, 20%, 18mΩ, ROHS
C3	1	PANASONIC	EEE-1EA471P	CAP, SMD, 10mm, 470µF, 25V, 20%, ALUM.ELEC., 380mA, ROHS
J5, J6	2	JOHNSON COMPONENTS	108-0740-001	CONN-JACK, BANANA-SS-SDRLESS, VERTICAL, ROHS
TP1-TP12	12	KEYSTONE	5005	CONN-COMPACT TEST PT, VERTICAL, RED, ROHS
J11, J15, J16	3	BERG/FCI	69190-202HLF	CONN-HEADER, 1x2, RETENTIVE, 2.54mm, 0.230x0.120, ROHS
J2, J4	2	SAMTEC	SSQ-103-02-T-D-RA	CONN-SOCKET STRIP, TH, 2x3, 2.54mm, TIN, R/A, ROHS
J1, J3	2	SAMTEC	TSW-103-08-T-D-RA	CONN-HEADER, 2x3, BRKAWY, 2.54mm, TIN, R/A, ROHS
D1	1	LUMEX	SSL-LXA3025IGC-TR	LED, SMD, 3x2.5mm, 4P, RED/GREEN, 12/20MCD, 2V
U1	1	INTERSIL	ISL8273MAIRZ	IC-80A DIGITAL DC/DC MODULE, 42P, HDA, ROHS
Q1	1	ON SEMICONDUCTOR	2N7002LT1G	TRANSISTOR-MOS, N-CHANNEL, SMD, SOT23, 60V, 115mA, ROHS
U2	1	INFINEON TECHNOLOGY	BSC010NE2LSI	TRANSIST-MOS, N-CHANNEL, 8P, PG-TDSON-8, 25V, 100A, ROHS
R4-R7	0			RESISTOR, SMD, 0603, 0.1%, MF, DNP-PLACE HOLDER
R11, R12	2	VENKEL	CR0603-10W-000T	RES, SMD, 0603, 0Ω, 1/10W, TF, ROHS
R10	1	KOA	RK73H1JT1002F	RES, SMD, 0603, 10k, 1/10W, 1%, TF, ROHS
R1	1	VENKEL	CR0603-10W-1003FT	RES, SMD, 0603, 100k, 1/10W, 1%, TF, ROHS
R8, R9	2	VENKEL	CR0603-10W-1501FT	RES, SMD, 0603, 1.5k, 1/10W, 1%, TF, ROHS
RFSET	1	PANASONIC	ERJ-3EKF1782V	RES, SMD, 0603, 17.8k, 1/10W, 1%, TF, ROHS
R13	1	VENKEL	CR0603-10W-2000FT	RES, SMD, 0603, 200Ω, 1/10W, 1%, TF, ROHS
RVSET	1	VENKEL	CR0603-10W-2152FT	RES, SMD, 0603, 21.5k, 1/10W, 1%, TF, ROHS
R57	1	YAGEO	RC0603FR-0747KL	RES, SMD, 0603, 47k, 1/10W, 1%, TF, ROHS
R3	1	VENKEL	CR0603-10W-4751FT	RES, SMD, 0603, 4.75k, 1/10W, 1%, TF, ROHS
R2	1	YAGEO	RC0603FR-076K65L	RES, SMD, 0603, 6.65k, 1/10W, 1%, TF, ROHS
R54	1	VISHAY	WSL2512R0100FEA	RES-CURR.SENSE, SMD, 2512, 0.01Ω, 1W, 1%, ROHS
SW1	1	C&K COMPONENTS	GT13MCBE	SWITCH-TOGGLE, THRU-HOLE, 5PIN, SPDT, 3POS, ON-OFF-ON, ROHS
J7-J10	4	BERG/FCI	KPA8CTP	HDWARE,MTG, CABLE TERMINAL,6-14AWG, LUG and SCREW, ROHS

Configuration File

Sample Configuration File for ISL8273M Module. Copy and paste (from RESTORE_FACTORY TO ### End User Store) to a notepad and save it as Confile_file_name.txt. The # symbol is used for a comment line. Following settings are already loaded to ISL8273M module as factory defaults.

```

RESTORE_FACTORY                # reset device to the factory setting
STORE_USER_ALL                 # Clears user memory space
# VOUT Related
VOUT_COMMAND
VOUT_MAX
VOUT_MARGIN_HIGH
VOUT_MARGIN_LOW
VOUT_OV_FAULT_LIMIT
VOUT_OV_FAULT_RESPONSE       0x80                # Disable and no retry
VOUT_OV_WARN_LIMIT
VOUT_UV_WARN_LIMIT
VOUT_UV_FAULT_LIMIT
VOUT_UV_FAULT_RESPONSE       0x80                # Disable and no retry
POWER_GOOD_ON
VOUT_TRANSITION_RATE         0xba00                # 1 mV/us
VOUT_DROOP                    0x0000                # 0 mV/A
VOUT_CAL_OFFSET              0x0000                # 0 mV/A
# IOUT Related
IOUT_CAL_GAIN                 0xb370                # 0.86 mV/A
IOUT_CAL_OFFSET              0x0000                # 0 A
IOUT_OC_FAULT_LIMIT
IOUT_UC_FAULT_LIMIT
MFR_IOUT_OC_FAULT_RESPONSE    0x80                # Disable and no retry
MFR_IOUT_UC_FAULT_RESPONSE    0x80                # Disable and no retry
ISENSE_CONFIG
# Other Faults
OT_FAULT_LIMIT                0xebe8                # 125 °C
OT_FAULT_RESPONSE            0x80                # Disable and no retry
OT_WARN_LIMIT                 0xeb70                # 110 °C
UT_WARN_LIMIT                 0xdc40                # -30 °C
UT_FAULT_LIMIT                0xe530                # -45 °C
UT_FAULT_RESPONSE            0x80                # Disable and no retry
VIN_OV_FAULT_LIMIT           0xd380                # 14 V
VIN_OV_FAULT_RESPONSE         0x80                # Disable and no retry
VIN_OV_WARN_LIMIT            0xd353                # 13.3 V
VIN_UV_WARN_LIMIT            0xca5d                # 4.73 V
VIN_UV_FAULT_LIMIT           0xca40                # 4.5 V
VIN_UV_FAULT_RESPONSE         0x80                # Disable and no retry
#Enable, Timing and Sequence Related
ON_OFF_CONFIG                 0x16                # Pin Enable, Soft Off
TON_DELAY                     0xca80                # 5 ms
TON_RISE                      0xca80                # 5 ms
TOFF_DELAY                    0xca80                # 5 ms
TOFF_FALL                     0xca80                # 5 ms
POWER_GOOD_DELAY              0xca00                # 4 ms
FREQUENCY_SWITCH
SYNC_CONFIG                   0x00                # Use Pin-strap for FSW setting
SEQUENCE                      0x0000                # Sequence Disabled
# Manufacturer Related
MFR_ID                        Intersil Corp        # Example Only
MFR_MODEL
MFR_REVISION                   Rev-1                # Example Only
MFR_LOCATION                   Milpitas, CA         # Example Only
MFR_DATE                       09/05/2014          # Example Only
MFR_SERIAL                     1234                # Example Only
USER_DATA_00                   Module               # Example Only
# Advance Settings
USER_CONFIG                    0x80                # ASCR on for Start, Open Drain PG
DDC_CONFIG                     0x0a01              # DDC rail ID = 10, 2-phase
DDC_GROUP                      0x00000000          # All Broadcast disabled
# Loop Compensation
ASCR_CONFIG
STORE_USER_ALL                 # Store all above settings to NVRAM
### End User Store

```

Layout

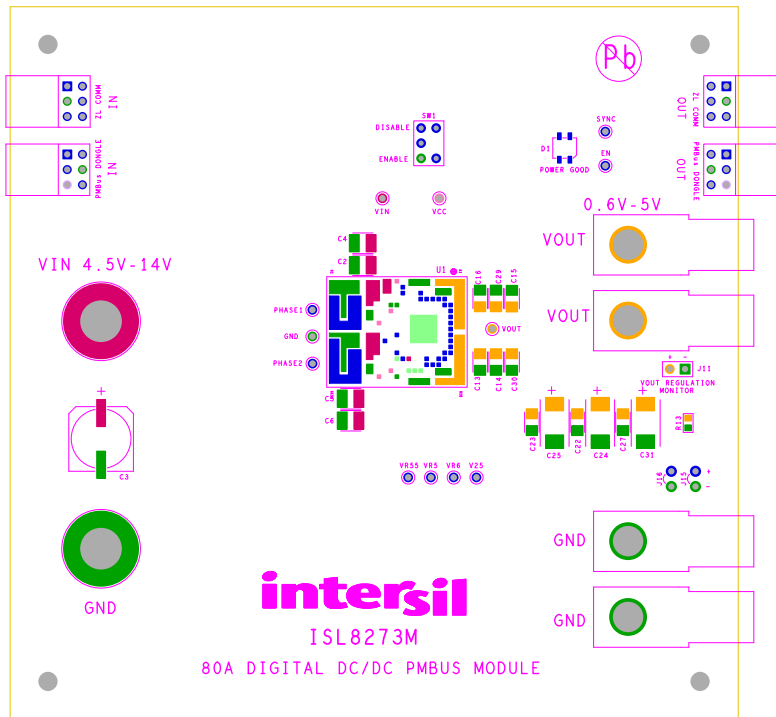


FIGURE 6. SILKSCREEN TOP

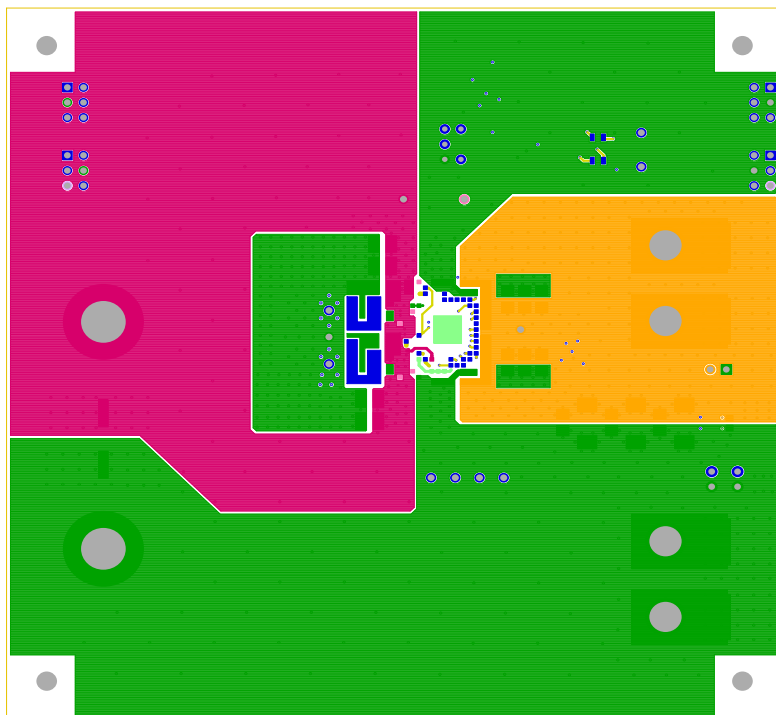


FIGURE 7. TOP LAYER COMPONENT SIDE

Layout (Continued)

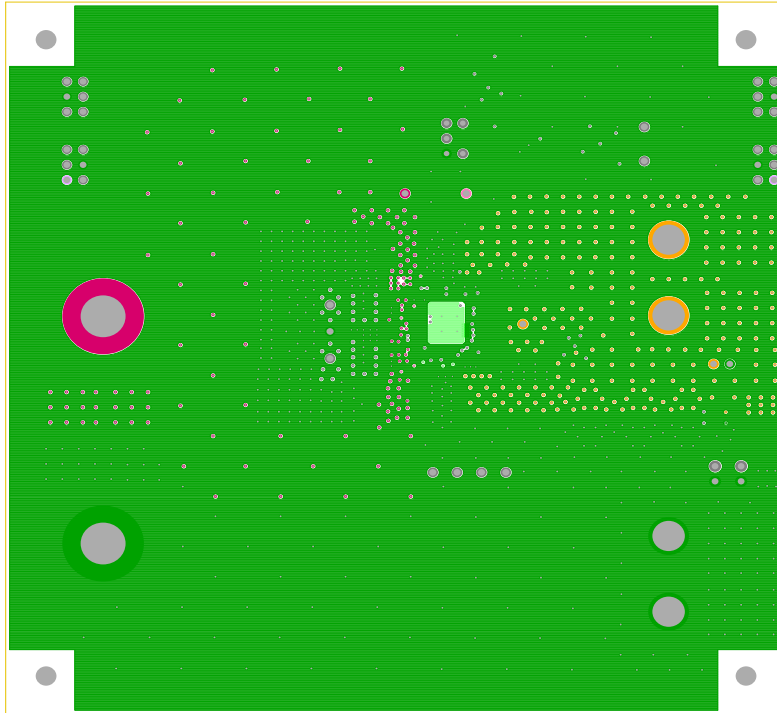


FIGURE 8. LAYER 2

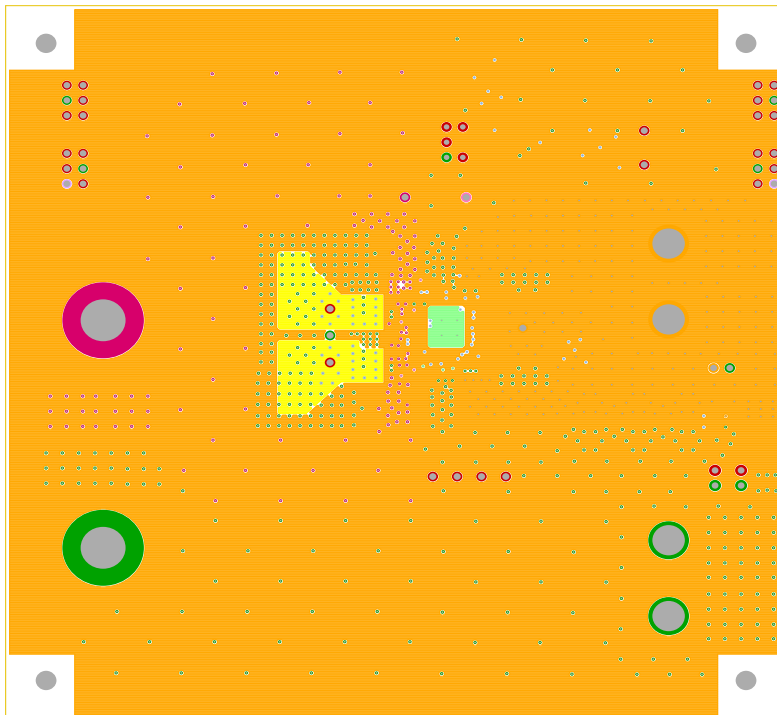


FIGURE 9. LAYER 3

Layout (Continued)

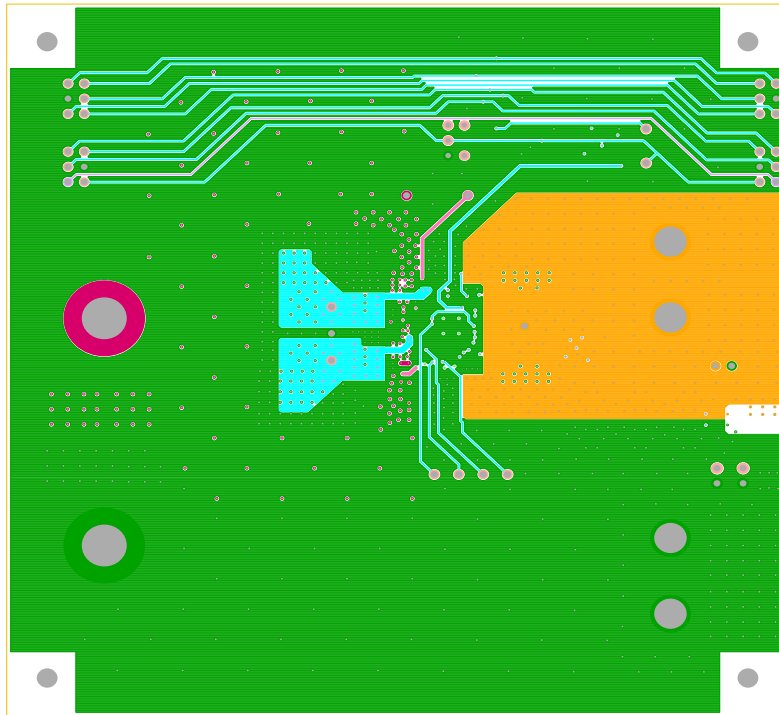


FIGURE 10. LAYER 4

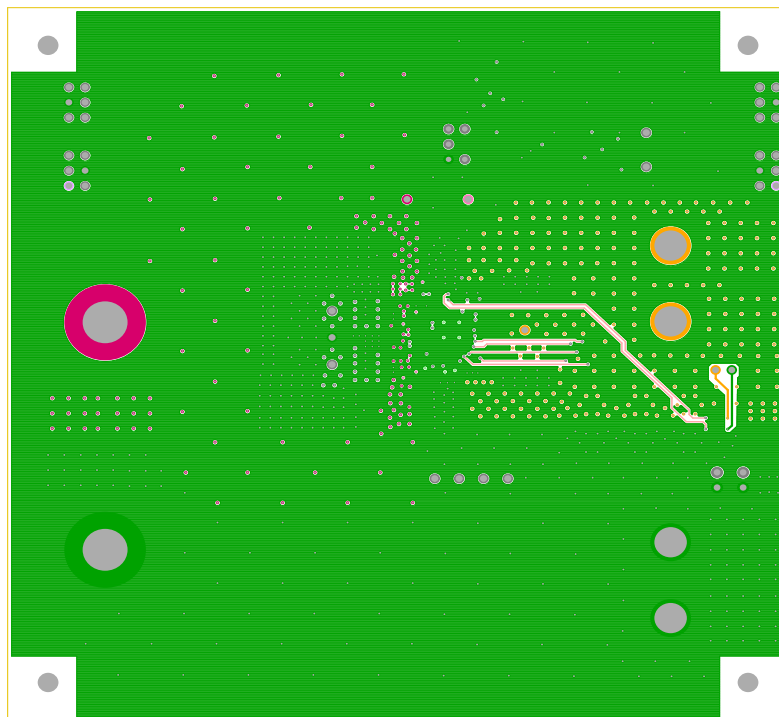


FIGURE 11. LAYER 5

Layout (Continued)

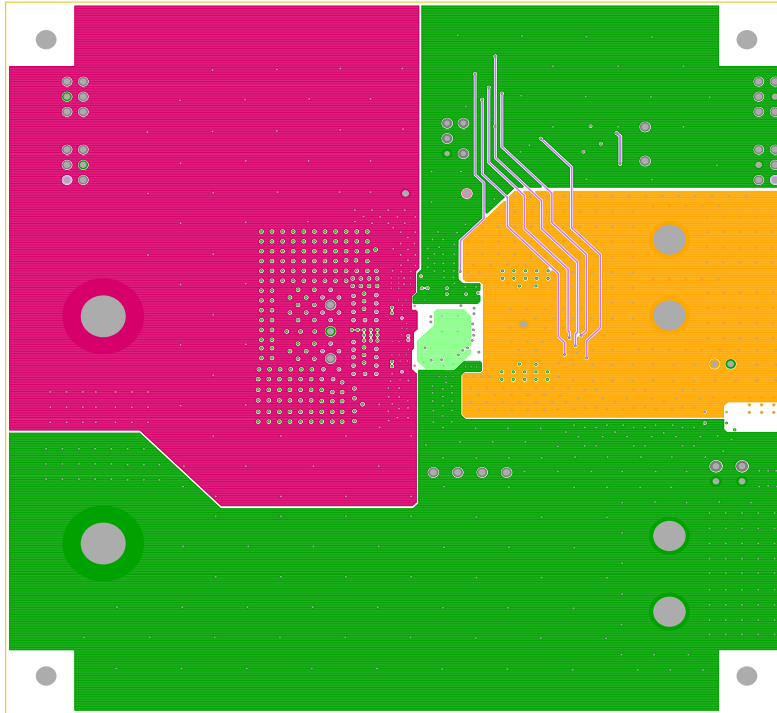


FIGURE 12. LAYER 6

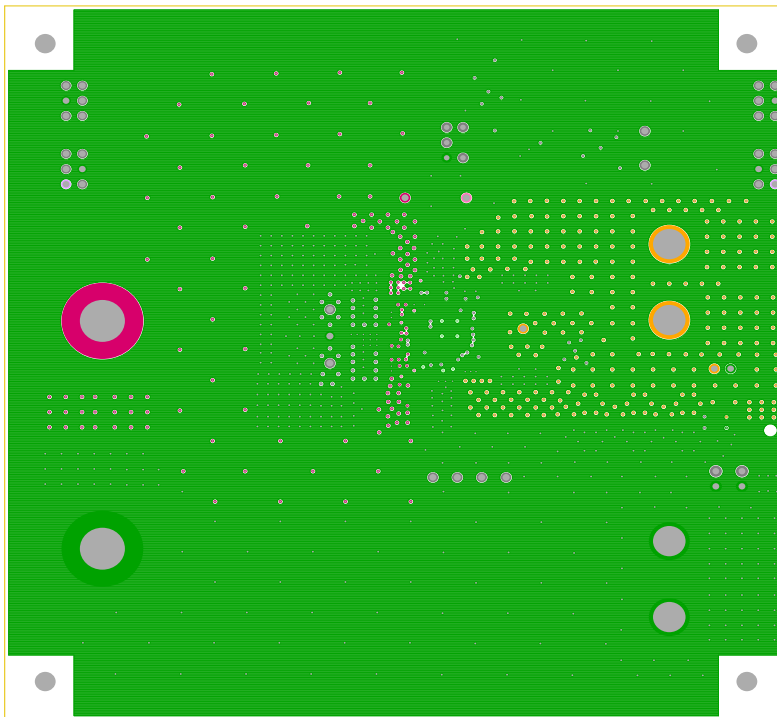


FIGURE 13. LAYER 7

Layout (Continued)

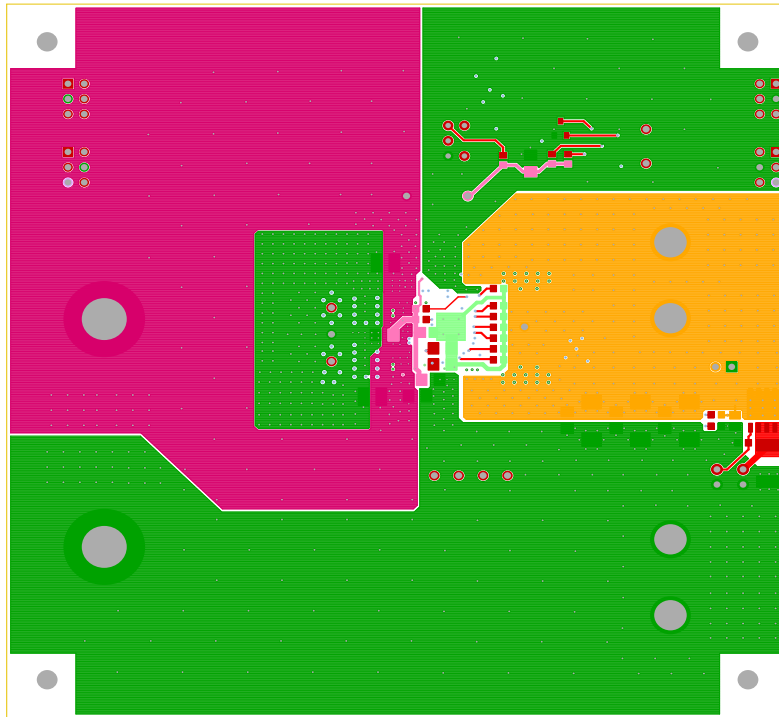


FIGURE 14. BOTTOM LAYER SOLDER SIDE

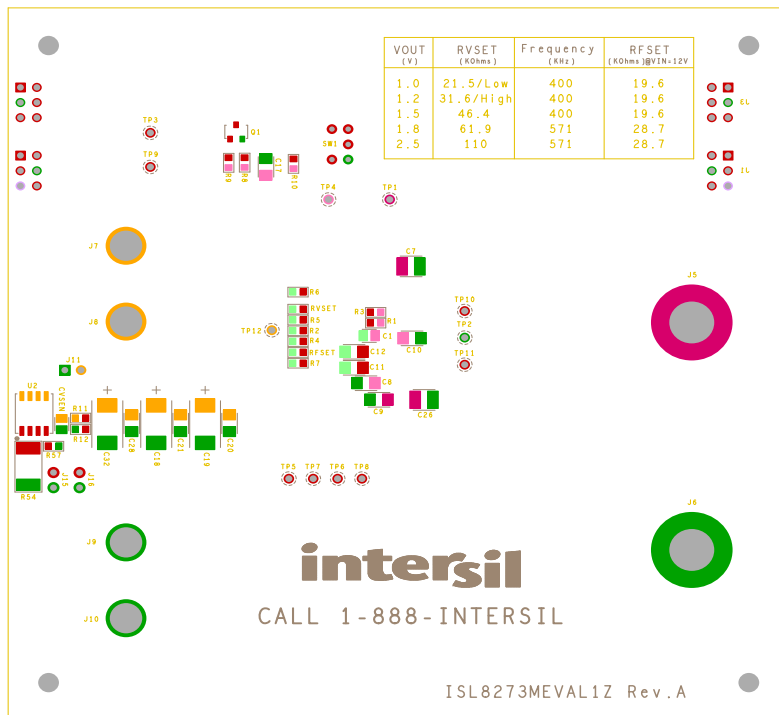


FIGURE 15. SILKSCREEN BOTTOM

Typical Performance Data The following data was acquired using a ISL8273MEVAL1Z evaluation board.

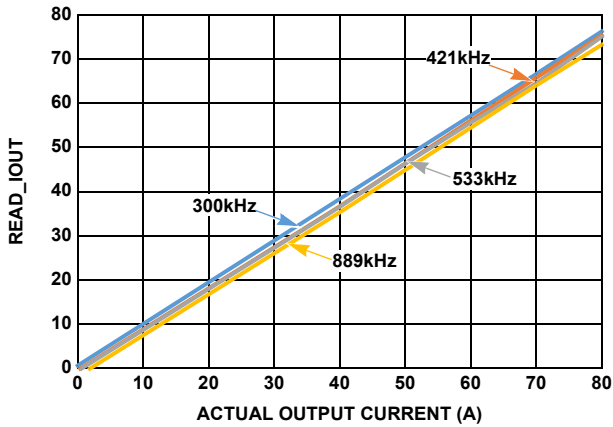


FIGURE 16. OUTPUT CURRENT MEASUREMENT ACCURACY AT $V_{IN} = 12V$, $V_{OUT} = 1V$, $T_A = +25^\circ C$ FOR VARIOUS SWITCHING FREQUENCIES

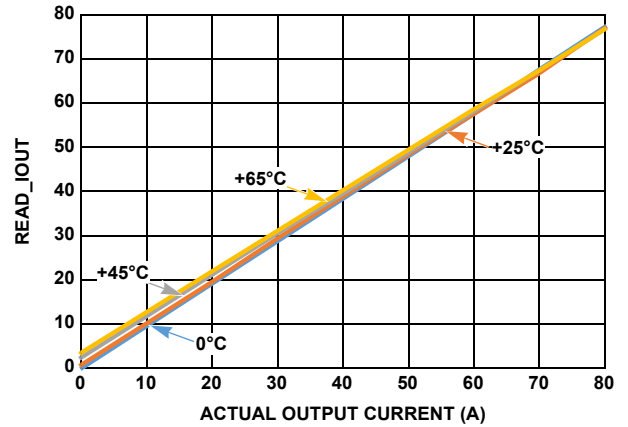


FIGURE 17. OUTPUT CURRENT MEASUREMENT ACCURACY AT $V_{IN} = 12V$, $V_{OUT} = 1V$, $f_{SW} = 300kHz$ FOR VARIOUS AMBIENT TEMPERATURES

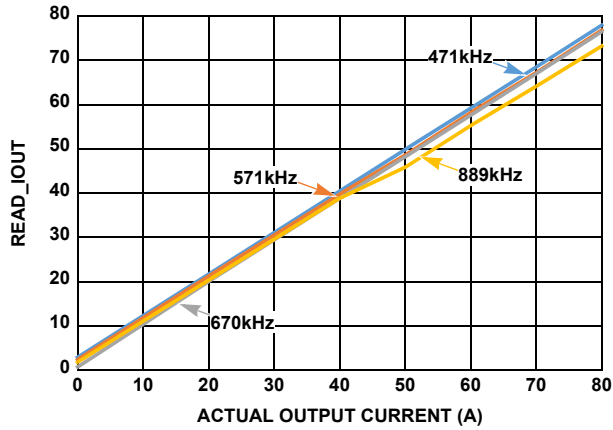


FIGURE 18. OUTPUT CURRENT MEASUREMENT ACCURACY AT $V_{IN} = 12V$, $V_{OUT} = 2.5V$, $T_A = +25^\circ C$ FOR VARIOUS SWITCHING FREQUENCIES

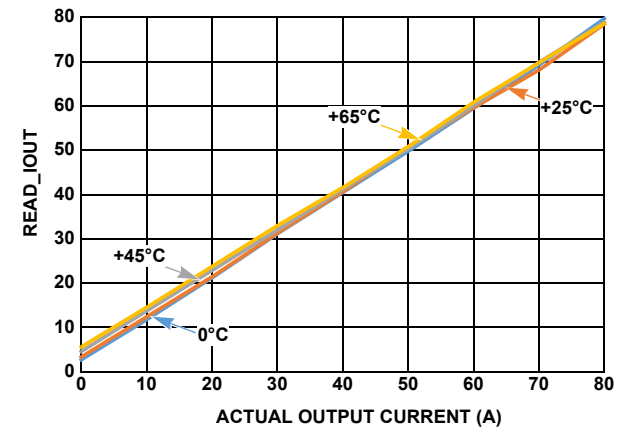


FIGURE 19. OUTPUT CURRENT MEASUREMENT ACCURACY AT $V_{IN} = 12V$, $V_{OUT} = 2.5V$, $f_{SW} = 571kHz$ FOR VARIOUS AMBIENT TEMPERATURES

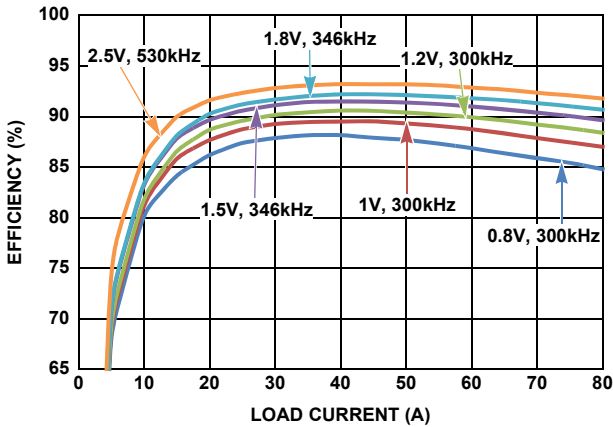


FIGURE 20. EFFICIENCY vs OUTPUT CURRENT AT $V_{IN} = 12V$, FOR VARIOUS OUTPUT VOLTAGES

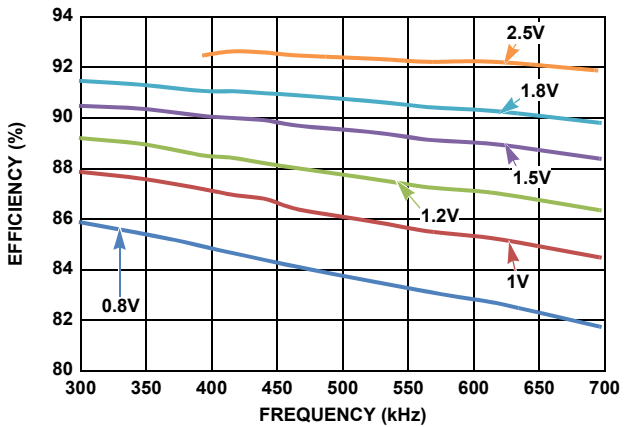


FIGURE 21. EFFICIENCY vs SWITCHING FREQUENCY AT $V_{IN} = 12V$, $I_{OUT} = 70A$ FOR VARIOUS OUTPUT VOLTAGES

Typical Performance Data The following data was acquired using a ISL8273MEVAL1Z evaluation board. (Continued)

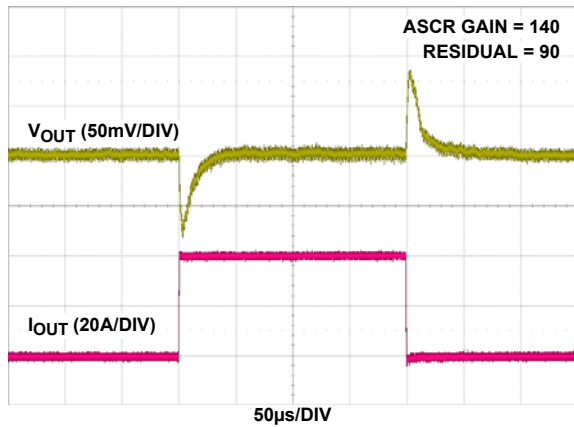


FIGURE 22. LOAD TRANSIENT RESPONSE AT $V_{IN} = 12V$, $V_{OUT} = 1V$, $I_{OUT} = 0A$ TO $40A$ ($>100A/\mu s$), $f_{SW} = 300kHz$.
 $C_{OUT} = 14 \times 100\mu F$ CERAMIC + $6 \times 470\mu F$ POSCAP

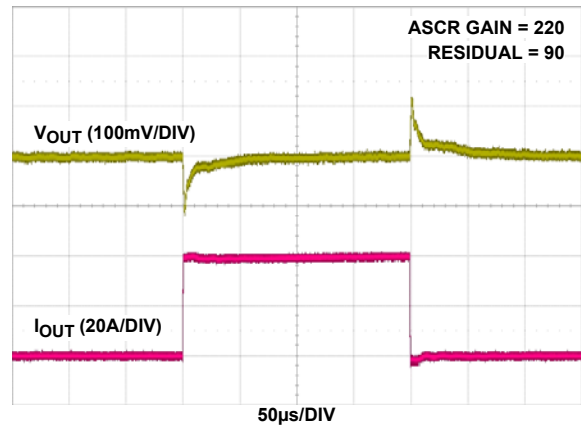


FIGURE 23. LOAD TRANSIENT RESPONSE AT $V_{IN} = 12V$, $V_{OUT} = 2.5V$, $I_{OUT} = 0A$ TO $40A$ ($>100A/\mu s$), $f_{SW} = 800kHz$.
 $C_{OUT} = 6 \times 100\mu F$ CERAMIC + $3 \times 470\mu F$ POSCAP

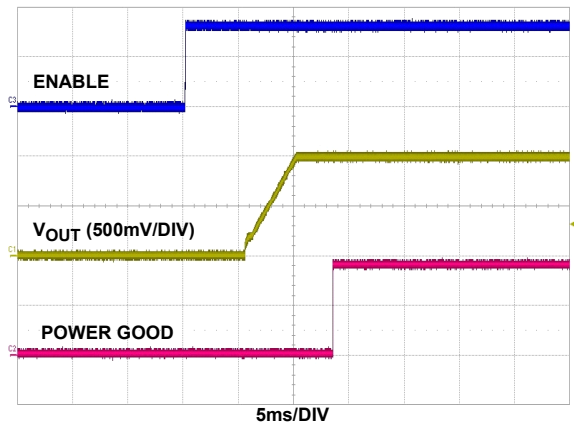


FIGURE 24. SOFT-START AT $V_{IN} = 12V$, $V_{OUT} = 1V$, $T_{ON_DELAY} = 5ms$, $T_{ON_RISE} = 5ms$, $T_{POWER_GOOD_DELAY} = 3ms$

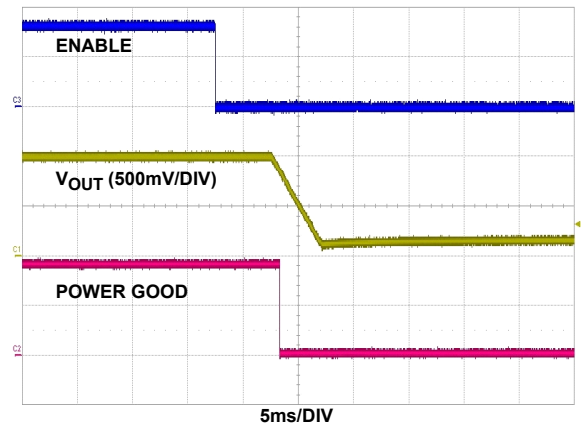


FIGURE 25. SOFT-STOP AT $V_{IN} = 12V$, $V_{OUT} = 1V$, $T_{OFF_DELAY} = 5ms$, $T_{OFF_FALL} = 5ms$

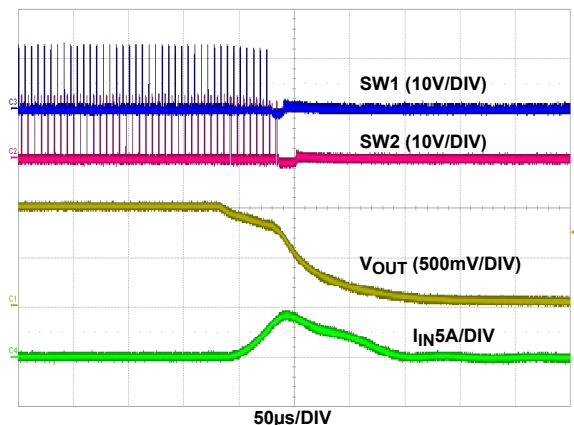


FIGURE 26. OUTPUT SHORT-CIRCUIT PROTECTION AT $V_{IN} = 12V$, $V_{OUT} = 1V$, $f_{SW} = 421kHz$

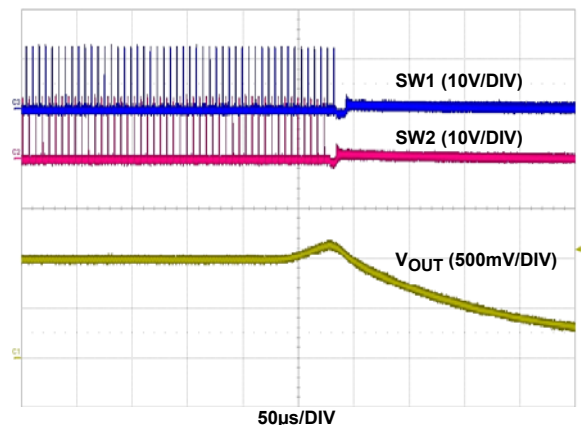


FIGURE 27. OUTPUT OVERVOLTAGE PROTECTION AT $V_{IN} = 12V$, $V_{OUT} = 1V$, $f_{SW} = 421kHz$, $V_{OUT_OV_FAULT_LIMIT} = 1.15V$

Typical Performance Data The following data was acquired using a ISL8273MEVAL1Z evaluation board. (Continued)

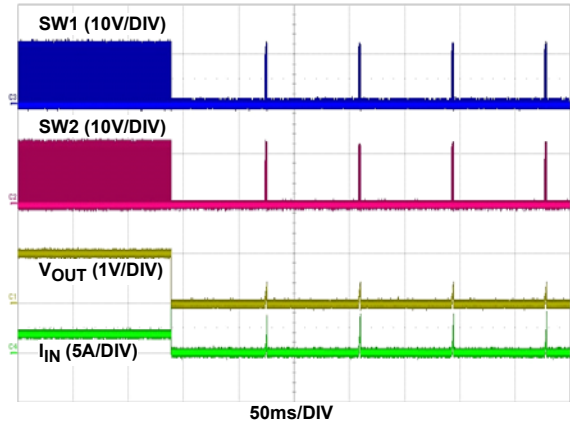


FIGURE 28. OUTPUT SHORT-CIRCUIT PROTECTION WITH CONTINUOUS RETRY ENABLED (HICCUP MODE), $V_{IN} = 12V$, $V_{OUT} = 1V$

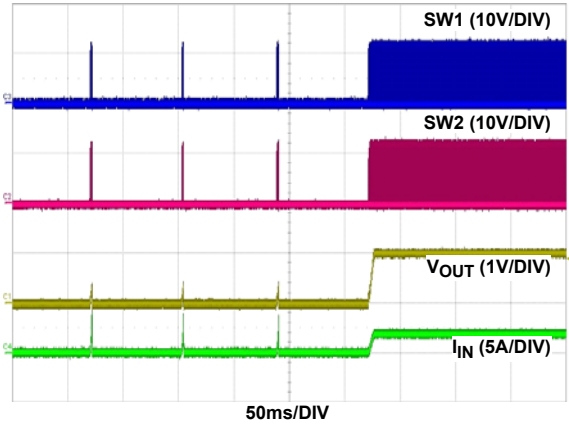


FIGURE 29. OUTPUT SHORT-CIRCUIT RECOVERY FROM CONTINUOUS RETRY (HICCUP MODE). $V_{IN} = 12V$, $V_{OUT} = 1V$

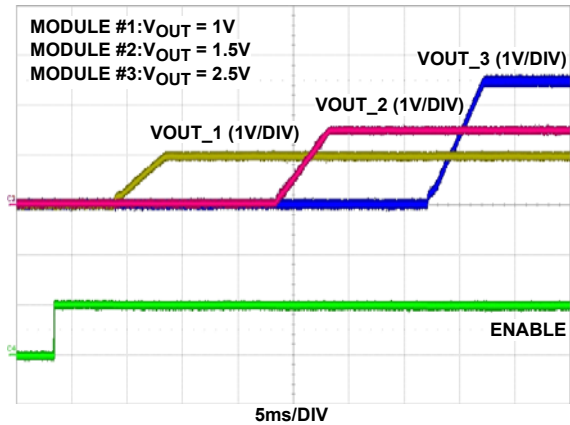


FIGURE 30. SOFT-START WITH OUTPUT SEQUENCING AT $V_{IN} = 12V$, THREE ISL8273MEVAL1Z BOARDS ARE CONNECTED IN DAISY CHAIN

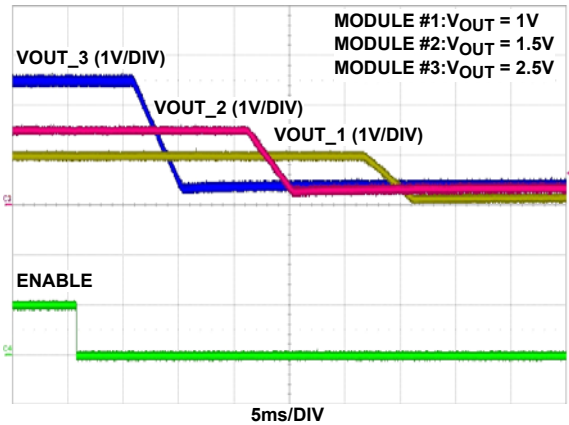


FIGURE 31. SOFT-STOP WITH OUTPUT SEQUENCING AT $V_{IN} = 12V$, THREE ISL8273MEVAL1Z BOARDS ARE CONNECTED IN DAISY CHAIN

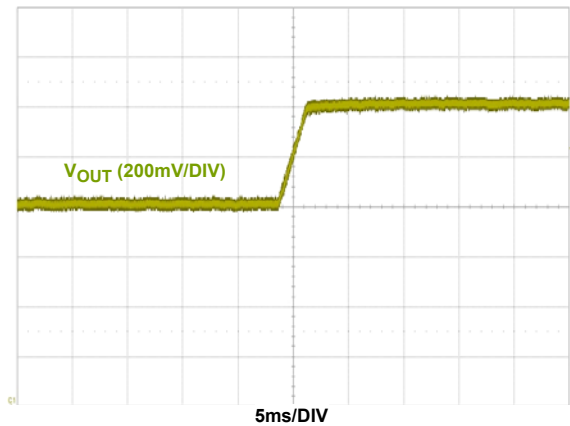


FIGURE 32. DYNAMIC VOLTAGE SCALING WITH V_{OUT} CHANGE FROM 1V TO 1.1V, $V_{IN} = 12V$, $V_{OUT_TRANSITION_RATE} = 1mV/\mu s$

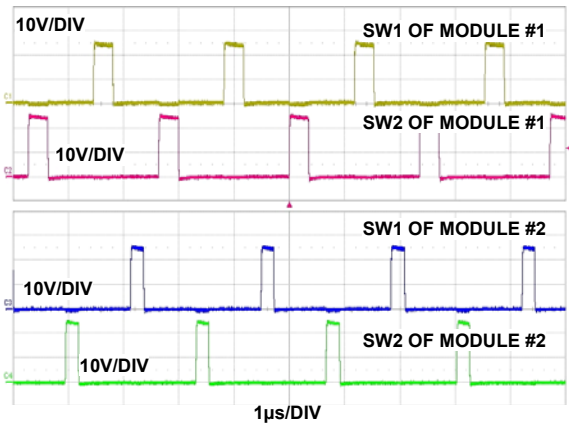


FIGURE 33. PHASE SPREADING/INTERLEAVING, TWO ISL8273MEVAL1Z BOARDS ARE CONNECTED IN DAISY CHAIN, MODULE #1 RAIL POSITION: 0; MODULE #2 RAIL POSITION:4. $V_{IN} = 12V$, $V_{OUT_1} = 1.8V$, $V_{OUT_2} = 1.2V$, $f_{SW} = 421kHz$

Typical Performance Data The following data was acquired using a ISL8273MEVAL1Z evaluation board. (Continued)

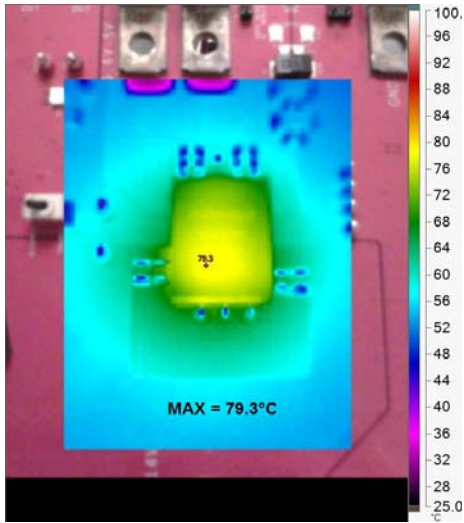


FIGURE 34. THERMAL IMAGE AT $V_{IN} = 12V$, $V_{OUT} = 1V$, $I_{OUT} = 80A$, $f_{SW} = 300kHz$, $T_A = +25^\circ C$, NO AIRFLOW

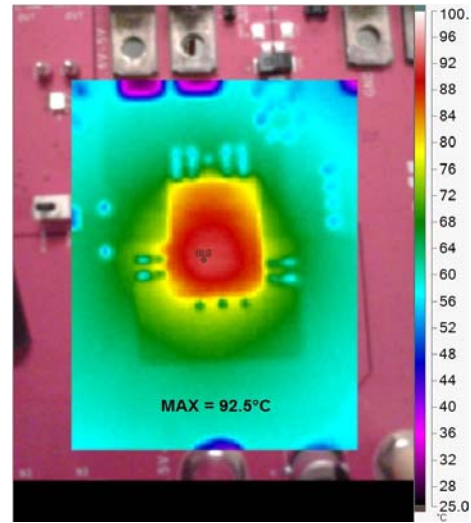


FIGURE 35. THERMAL IMAGE AT $V_{IN} = 12V$, $V_{OUT} = 1.8V$, $I_{OUT} = 80A$, $f_{SW} = 350kHz$, $T_A = +25^\circ C$, NO AIRFLOW

Intersil Corporation reserves the right to make changes in circuit design, software and/or specifications at any time without notice. Accordingly, the reader is cautioned to verify that the document is current before proceeding.

For information regarding Intersil Corporation and its products, see www.intersil.com