

CUSTOMER PRINT

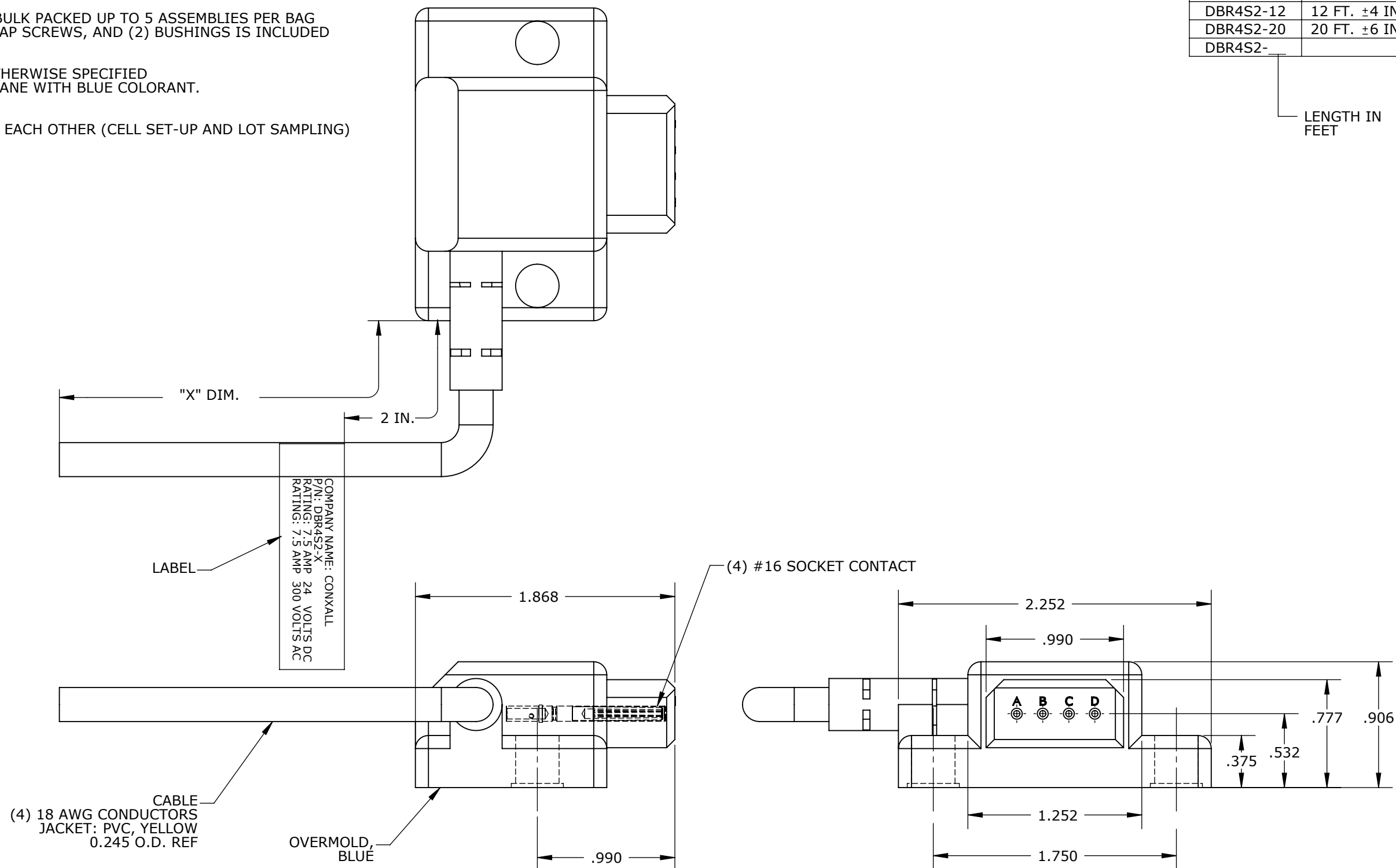
PART NUMBER: DBR4S2-XFAM

PART NO.	"X" DIM.
DBR4S2-6	6 FT. ±2 IN.
DBR4S2-10	10 FT. ±3 IN.
DBR4S2-12	12 FT. ±4 IN.
DBR4S2-20	20 FT. ±6 IN.
DBR4S2-	

LENGTH IN FEET

NOTES:

1. FINISHED PRODUCT TO BE COILED AND BULK PACKED UP TO 5 ASSEMBLIES PER BAG  
HARDWARE KIT WITH (2) O-RINGS, (2) CAP SCREWS, AND (2) BUSHINGS IS INCLUDED WITH EACH DIE BLOCK.
2. FOR PART NUMBER SEE TABLE.
3. ALL DIMENSIONS REFERENCE UNLESS OTHERWISE SPECIFIED
4. OVERMOLD BOOT MATERIAL: POLYURETHANE WITH BLUE COLORANT.
5. ELECTRICAL TEST  
a) PIN TO WIRE CONTINUITY  
b) HI-POT @1500V DC ALL CONTACTS TO EACH OTHER (CELL SET-UP AND LOT SAMPLING)



COMPANY NAME: CONXALL  
P/N: DBR4S2-X  
RATING: 7.5 AMP 24 VOLTS DC  
RATING: 7.5 AMP 300 VOLTS AC

**CUSTOMER APPROVAL**

THIS DOCUMENT CONTAINS CONFIDENTIAL INFORMATION PROPRIETARY TO CONXALL CORPORATION. ANY REPRODUCTION, DISCLOSURE, OR USE OF THIS DOCUMENT /INFORMATION IS EXPRESSLY PROHIBITED UNLESS AUTHORIZED IN WRITING BY CONXALL CORPORATION.

APPROVED BY: \_\_\_\_\_  
DATE: \_\_\_\_\_

C	BZ	01-12-11	UPDATED MANUFACTURING DRAWING PER ECR 7731
B	BZ	11-04-09	UPDATED MANUFACTURING DRAWING PER ECR 7297
A	BZ	06-09-09	DRAWING CREATED PER DOR 09-1230JT-2
REV.	INIT.	DATE	DESCRIPTION
ALL INFORMATION ILLUSTRATED IS THE PROPERTY OF CONXALL CORPORATION. UNAUTHORIZED DUPLICATION OR DISTRIBUTION OF THIS DOCUMENT IS PROHIBITED.		ORIG. DRAWN BY: BZ	DATE: 06-09-09
ALL UNITS ARE IN FEET, INCHES, FRACTION OF INCHES AND DECIMALS.		CHECKED BY:	 601 E. WILDWOOD VILLA PARK, IL 60181
- CRITICAL CHARACTERISTIC FLAG PER SPEC. XXXX		APPROVED BY:	
SCALE	SIZE	SHEET	CUSTOMER: STANDARD PRODUCT
NTS	B	1 OF 1	
FILE: DBR4S2-XFAM	DIRECTORY: SLW	PART NUMBER: DBR4S2-XFAM	REV C

WIRE COLOR CODE, END "A"			
POS. A	POS. B	POS. C	POS. D
RED/BLK	RED/WHT	RED	GRN